

# PHOENIX CONSTRUCTION SERVICES LTD

---

LEADERS IN COLLABORATIVE CONSTRUCTION AND FIT-OUT DELIVERY

## CLADDING PROJECTS

**Contact:**

Glyn Pockett

07703 808263

[glyn@phoenixcsl.co.uk](mailto:glyn@phoenixcsl.co.uk)



# Cladding Projects By Phoenix Construction

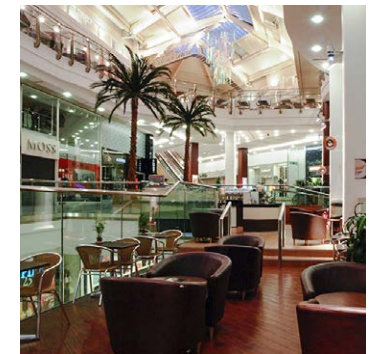
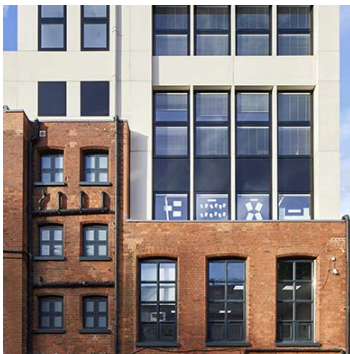
## Introduction:

As construction professionals both Glyn Pockett and business partner Mark Woods have a combined experience in managing complex construction projects of over 75 years and during that time have led many projects on complex cladding and curtain wall systems as well as glass assemblies and GRC moulded facings. Our team of construction professionals, with similar experience, are highly motivated individuals well versed in delivering projects to a very high quality, safely and on time and our data base of approved subcontractors and suppliers is extensive.

As a team we can demonstrate relevant experience of installing glass assemblies, curtain walling and pre cast GRC cladding from our new build school projects at Christ's Hospital, Aldenham and Gatehouse Independent Schools as well as our project at The Atrium Bracknell which involved the overhauling and re sealing of glazed curtain walling to an occupied seven storey atrium off of Mobile Elevating Work Platforms. With few exceptions all of our projects involve working at height over and within occupied locations and in close proximity to the public such

as our projects at Orchard Square Shopping Centre, Sheffield and The Pavilions Shopping Centre Birmingham which demonstrate our special knowledge in handling and installing glazed roofing systems and complex GRC cladding at high level over fully operational shopping malls. Our projects at The Royal Ballet School and Elizabeth House demonstrates our ability to manage the delivery and hoisting of pre- fabricated assemblies in confined and logistically difficult locations.

In terms of our ability to undertake planned maintenance we are framework contractors with both Chelsea & Westminster Hospital and The Royal Palaces where we undertake planned maintenance within areas of high security, sensitivity and where confidentiality and discretion is paramount. Our successful projects include residential and mixed use schemes at Buckingham Palace, St James's Palace and Kensington Palace and the construction and fit out of a new maternity unit, the refurbishment of common part fire escape doors and the formation of new mortuary facilities at Chelsea & Westminster Hospital.





# Cladding Projects By Phoenix Construction

## Project Examples:

Elizabeth House a £5.5m project providing a seven storey state of the art office building at Grays Inn Holburn. Works involved erecting a highly complex designed support scaffold to retain the existing façade of the existing 5 storey building and constructing seven new storey's within a challenging location; access to the site confined to one 4m wide tunnel walkway and the site was subject to five party wall awards to the three abutting office buildings as well as a pedestrian walkway along its entire frontage. The project was constructed without incident on time.

Gatehouse School a £5m project which provided a vertical GRC clad extension housing a Performing Arts Facility. The project had concrete piled foundations built within the existing assembly hall and thereafter working at height over the existing school using designed crash decks and loading decks. The school operations were maintained with full access for children and staff

throughout the project without incident and on time. The project fell within an area of UXB risk (WW2) which required full electronic mapping and detection throughout the piling process and required liaison with specialist ex Royal Engineers and the local authorities. The school was found to have been built upon an old cemetery and human remains were found which required liaison with the police and Coroner's office.

The Royal Ballet School a £3.4m project to provide student accommodation and associated catering and administrative support requiring a complex scaffold and support deck to protect adjoining buildings and public footpaths on both frontages of our corner site, one of the busiest cross road intersections in London. The project was again completed without incident on time.





# Cladding Projects By Phoenix Construction

## Project Examples:

Orchard Square Shopping Centre a £5m project including the reconstruction and fit out of a large retail unit along with the remodelling of the open shopping mall including a new structural food area with pre cast stone cladding and glazed assemblies

The Pavilions Shopping Centre a £6m project including the construction of a new food hall and remodelling of the mall floors. The project included the installation of structural glazing and signage to the frontage and the construction of a four storey 75Tonne structural

steel frame and concrete deck. The escalators were repositioned and concrete floors were infilled as well as extensive high level glass balustrades and GRG facings and column casings all behind demountable hoardings within a fully operational mall.

The Atrium Bracknell, a £750k project which involved the overhauling and re sealing of glazed curtain walling to an occupied seven storey atrium off of Mobile Elevating Work Platforms.





# PHOENIX CONSTRUCTION SERVICES LTD

---

LEADERS IN COLLABORATIVE CONSTRUCTION AND FIT-OUT DELIVERY

**Contact:**

Glyn Pockett  
07703 808263

[glyn@phoenixcsl.co.uk](mailto:glyn@phoenixcsl.co.uk)